

Gebrauchsanleitung

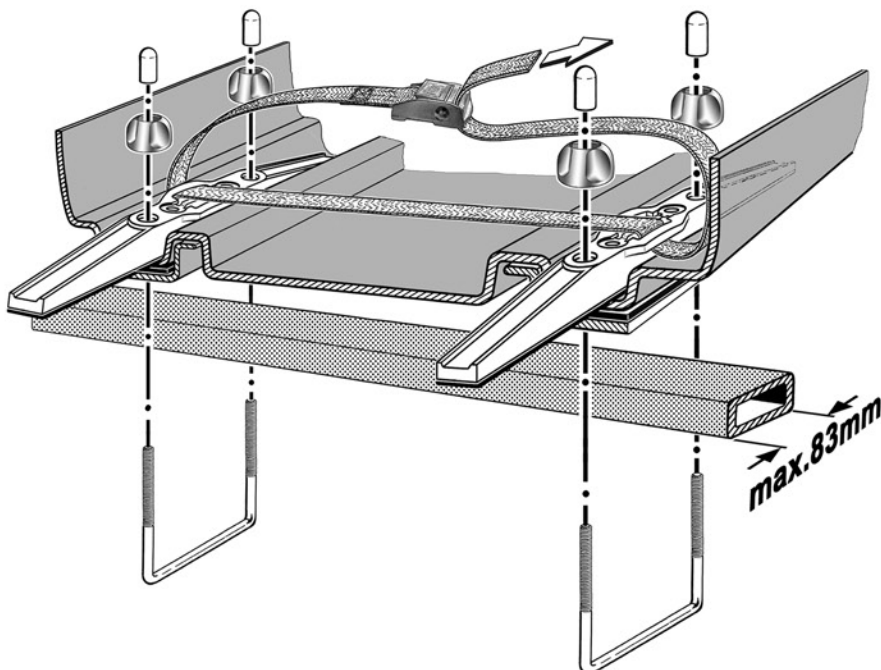
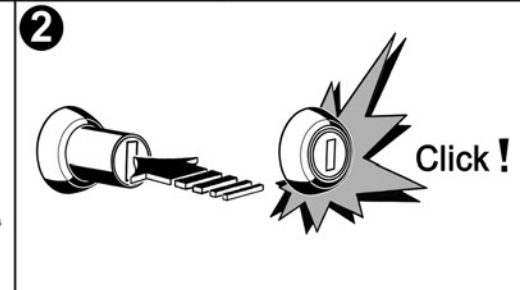
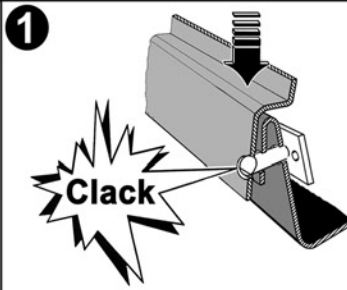
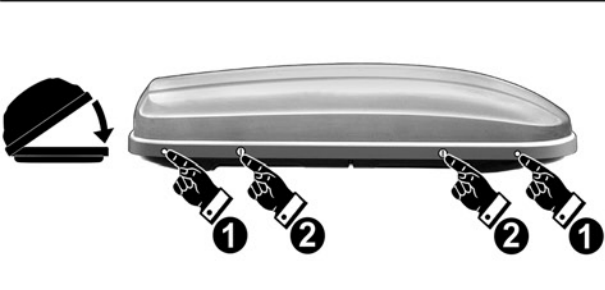
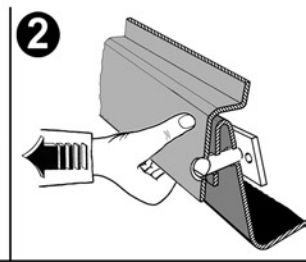
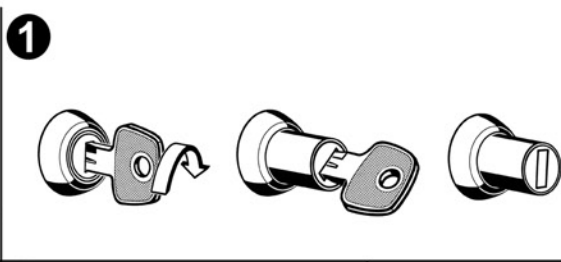
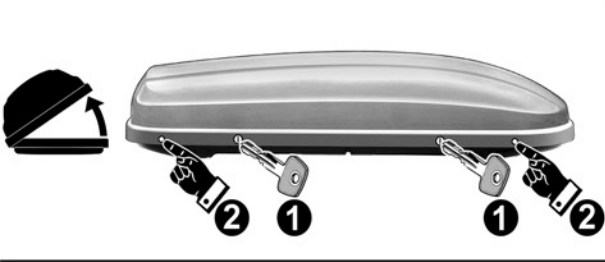
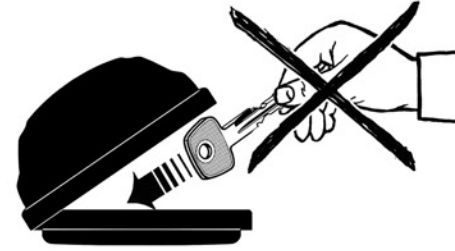
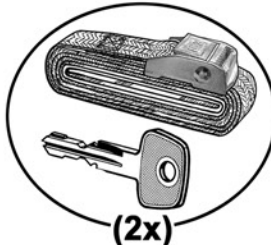
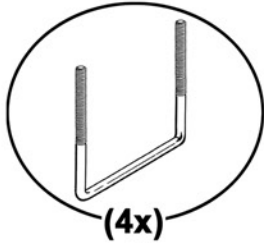
Komfort-Schiebe-Befestigung
mit Druckschloß

Instructions for use

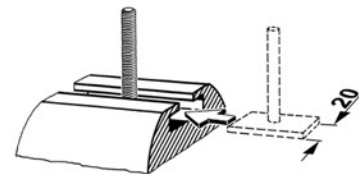
Comfort sliding fitting
with push button lock

Instructions d'utilisation

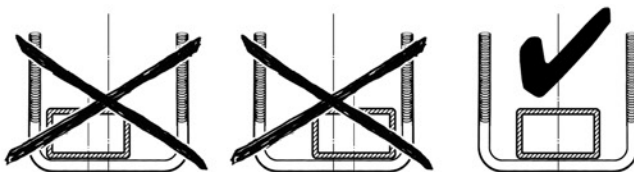
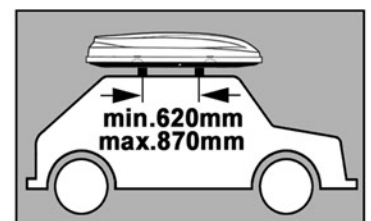
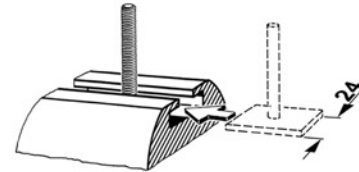
Montage glissé facile
avec la serrure de pression

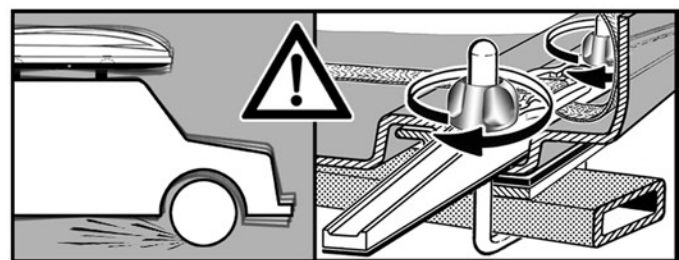
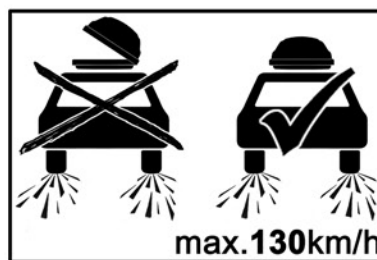
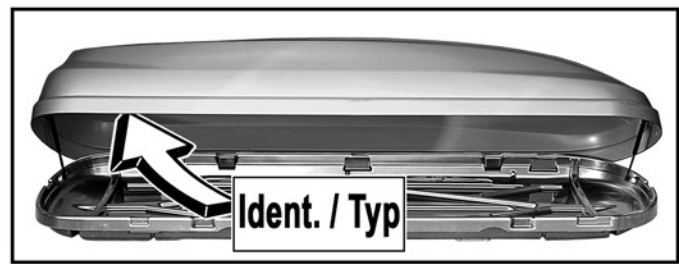
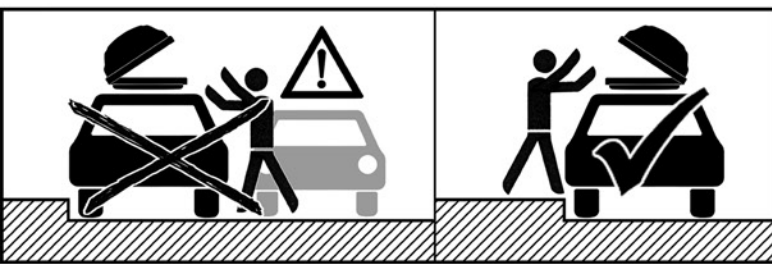
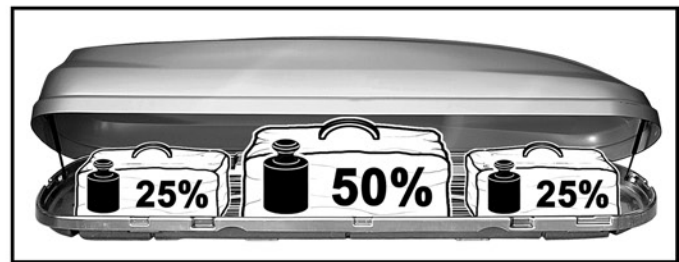
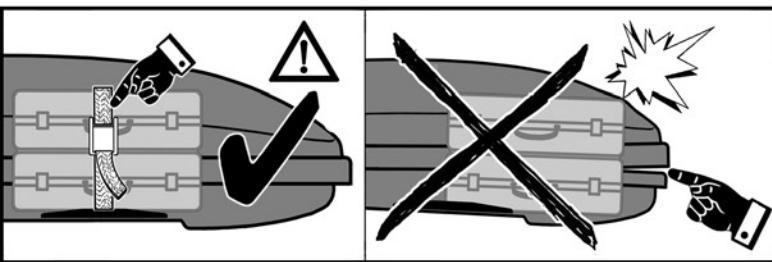
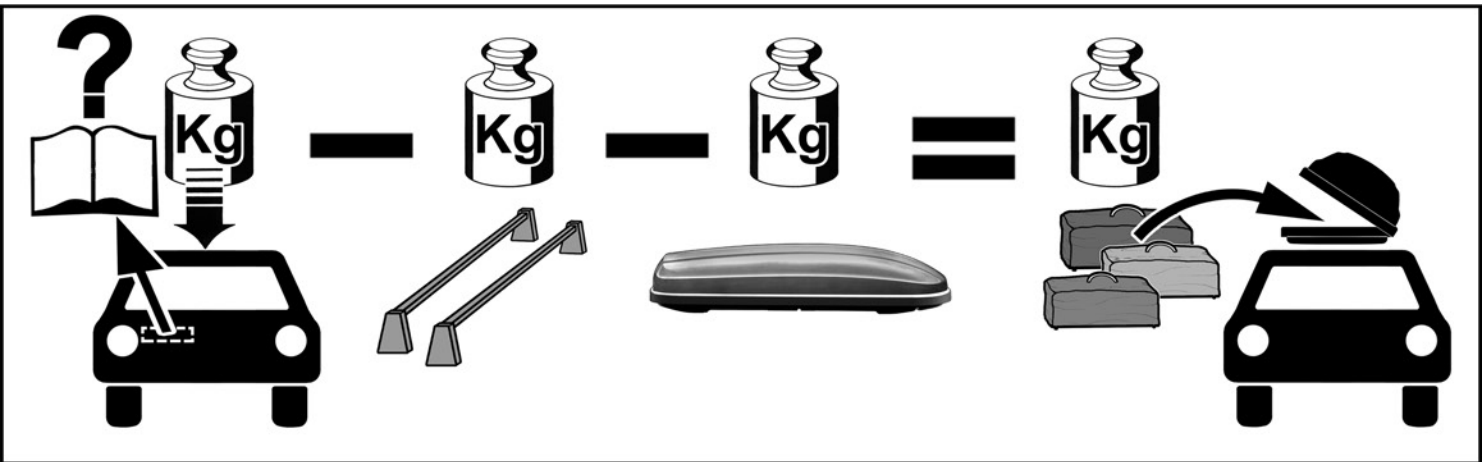
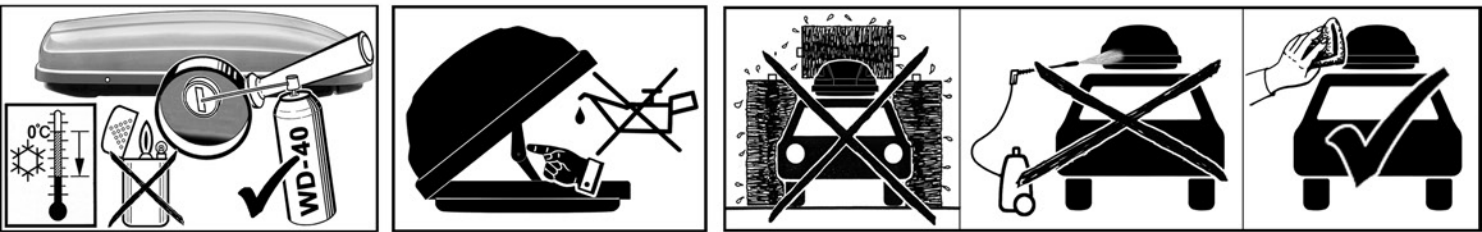
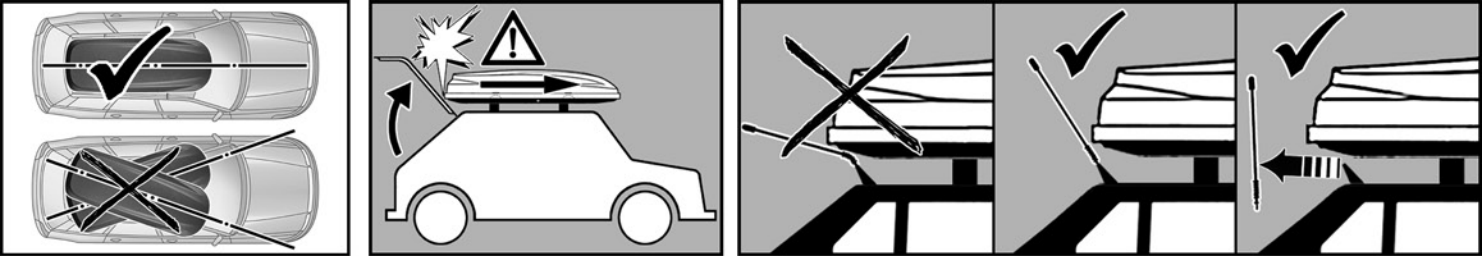


Art.-Nr. 0 52003 10



Art.-Nr. 0 52004 10





Dachcontainer Typ 81200

Hersteller: KAMEI 01805 - 26 34 46

Haupt-Verkaufsbezeichnung	Maße			Volumen Schüttgut	Eigengewicht	Gewichte	
	Länge cm	Breite cm	Höhe cm			zulässige Tragfähigkeit kg	Maximalgewicht beladen kg
Auch andere Verkaufsbezeichnungen sind genehmigt Husky L	190	75	38	330 Liter	13 kg	50 kg	63 kg
Kamei 450	220	82	38	450	19	50	69
Husky M	220	62	35	300	14	50	64